

平面図 S=1:200

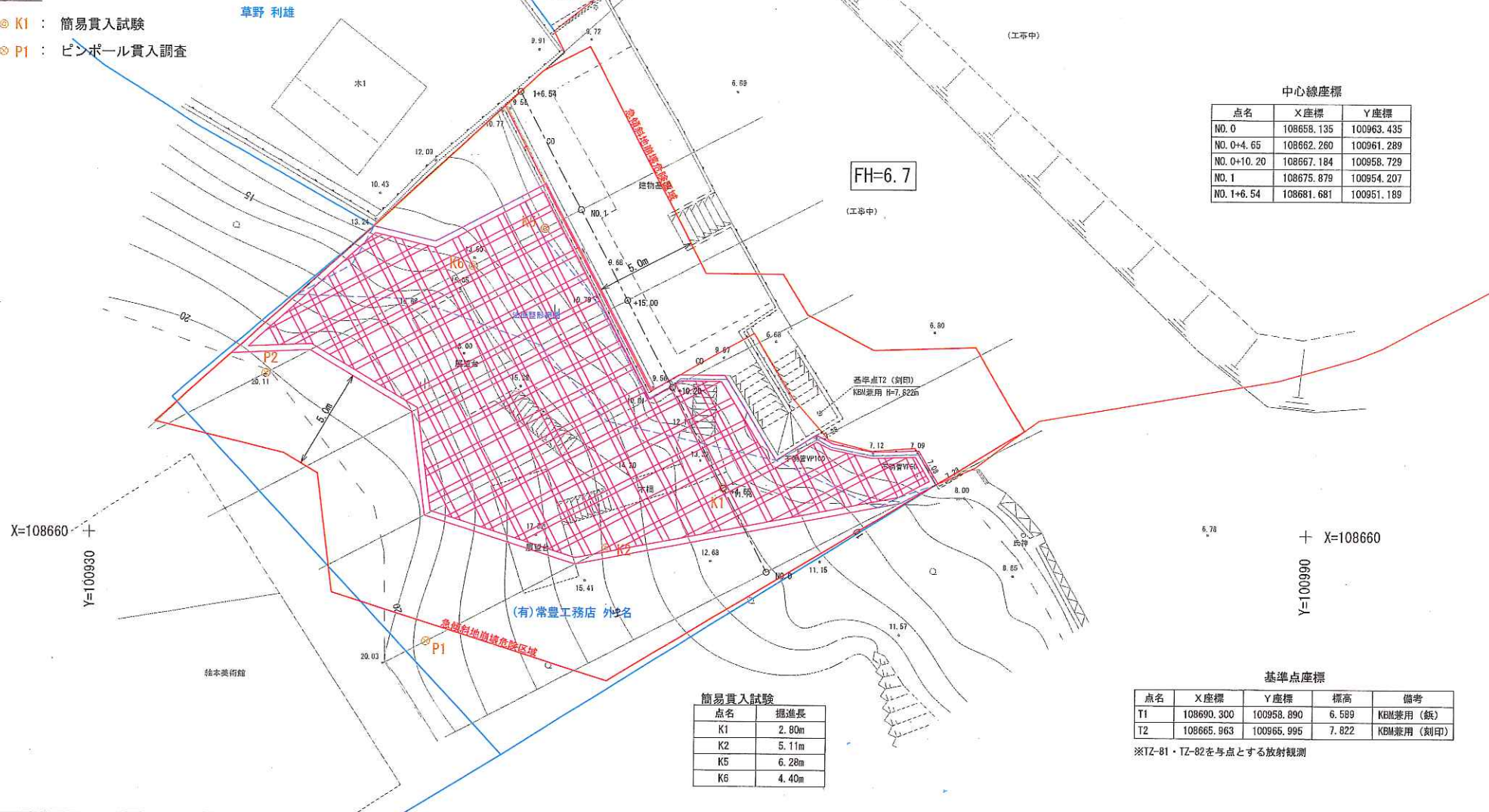


Y=100930
X=108690 +

Y=100990
+ X=108690

凡例

- ⊙ K1 : 簡易貫入試験
- ⊙ P1 : ビンポール貫入調査



中心線座標

点名	X座標	Y座標
NO. 0	108658.135	100963.435
NO. 0+4.65	108662.260	100961.289
NO. 0+10.20	108667.184	100958.729
NO. 1	108675.879	100954.207
NO. 1+6.54	108681.681	100951.189

FH=6.7

基準点座標

点名	X座標	Y座標	標高	備考
T1	108690.300	100958.890	6.589	KBM兼用(鉄)
T2	108665.963	100965.995	7.822	KBM兼用(刻印)

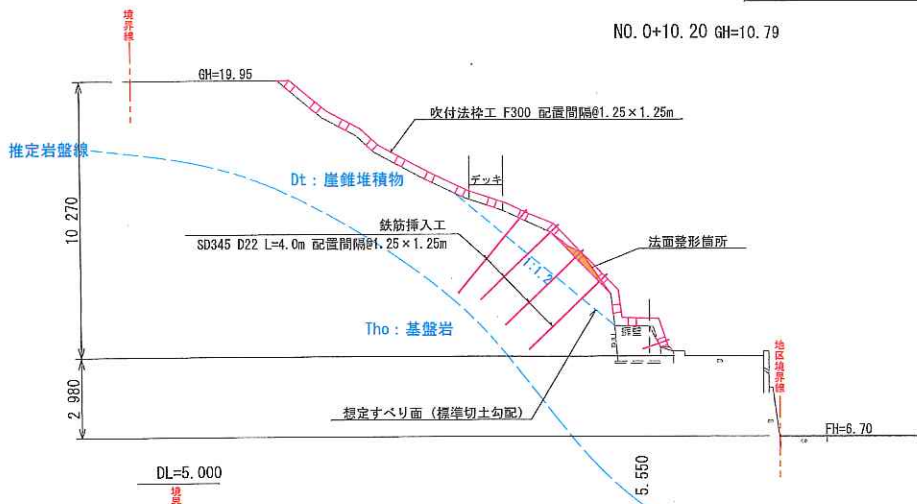
※TZ-81・TZ-82を与点とする放射観測

簡易貫入試験

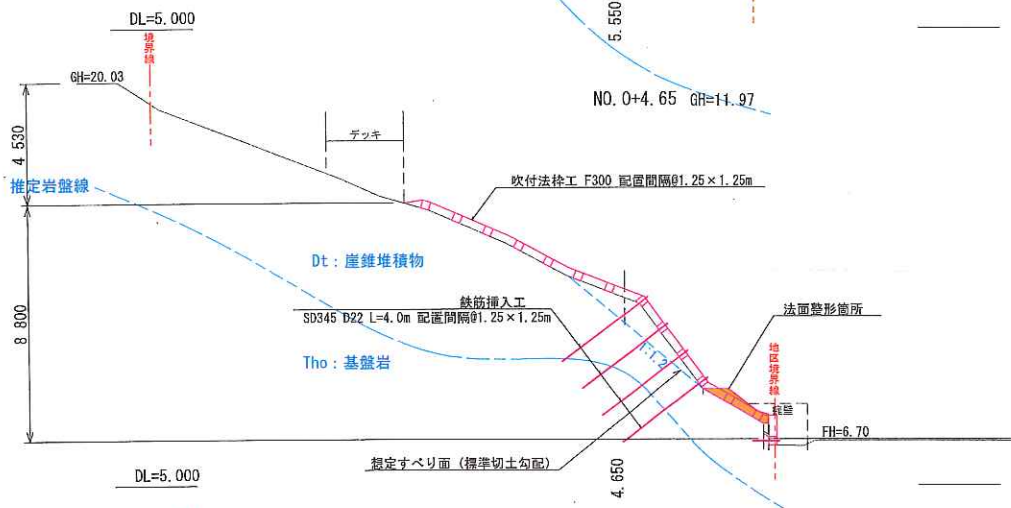
点名	掘進長
K1	2.80m
K2	5.11m
K5	6.28m
K6	4.40m

横断図 S=1:200

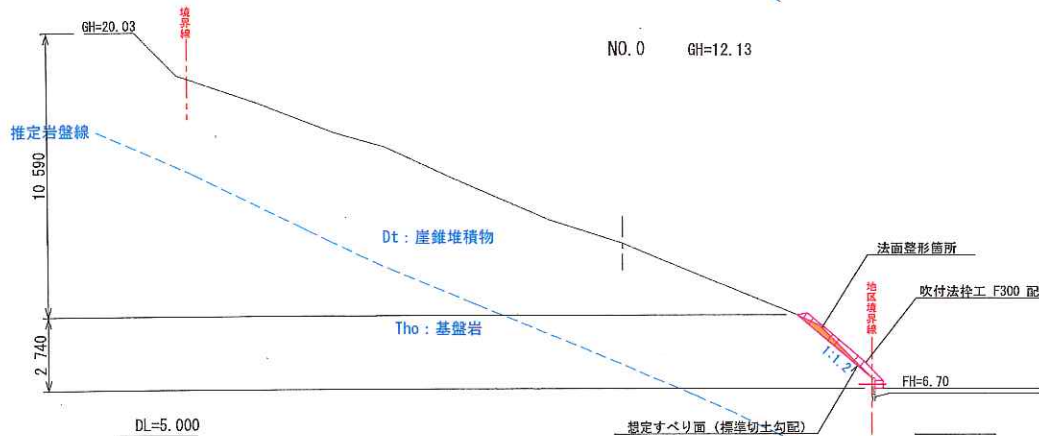
NO. 0+10.20 GH=10.79



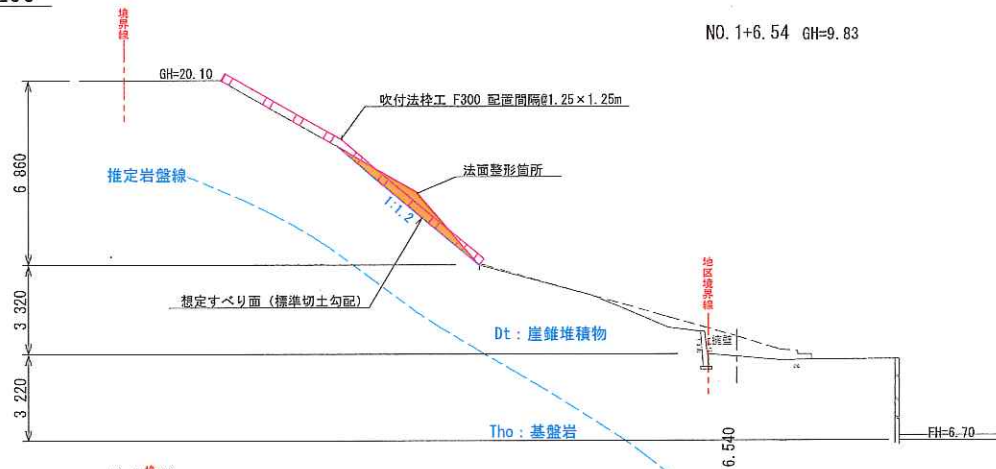
NO. 0+4.65 GH=11.97



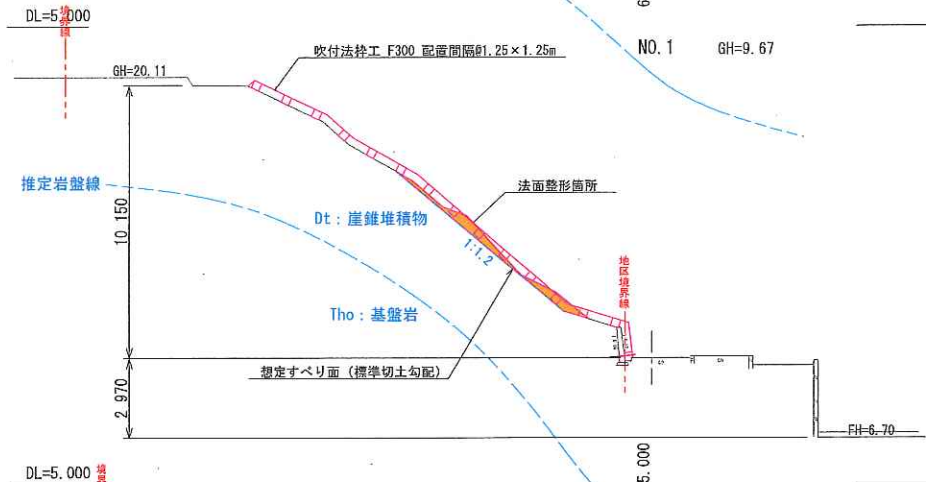
NO. 0 GH=12.13



NO. 1+6.54 GH=9.83



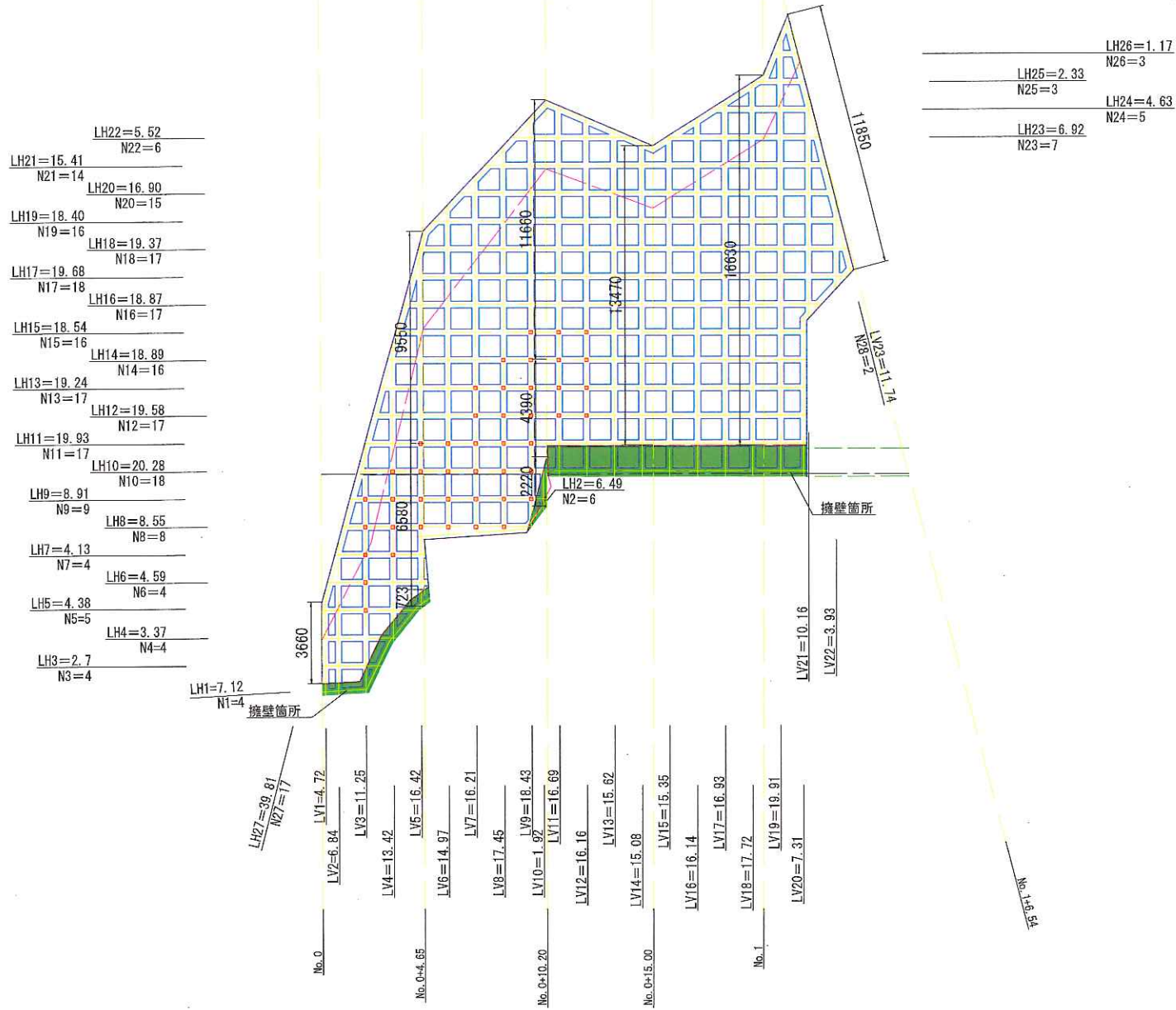
NO. 1 GH=9.67



NO. 0+15.00 GH=9.67



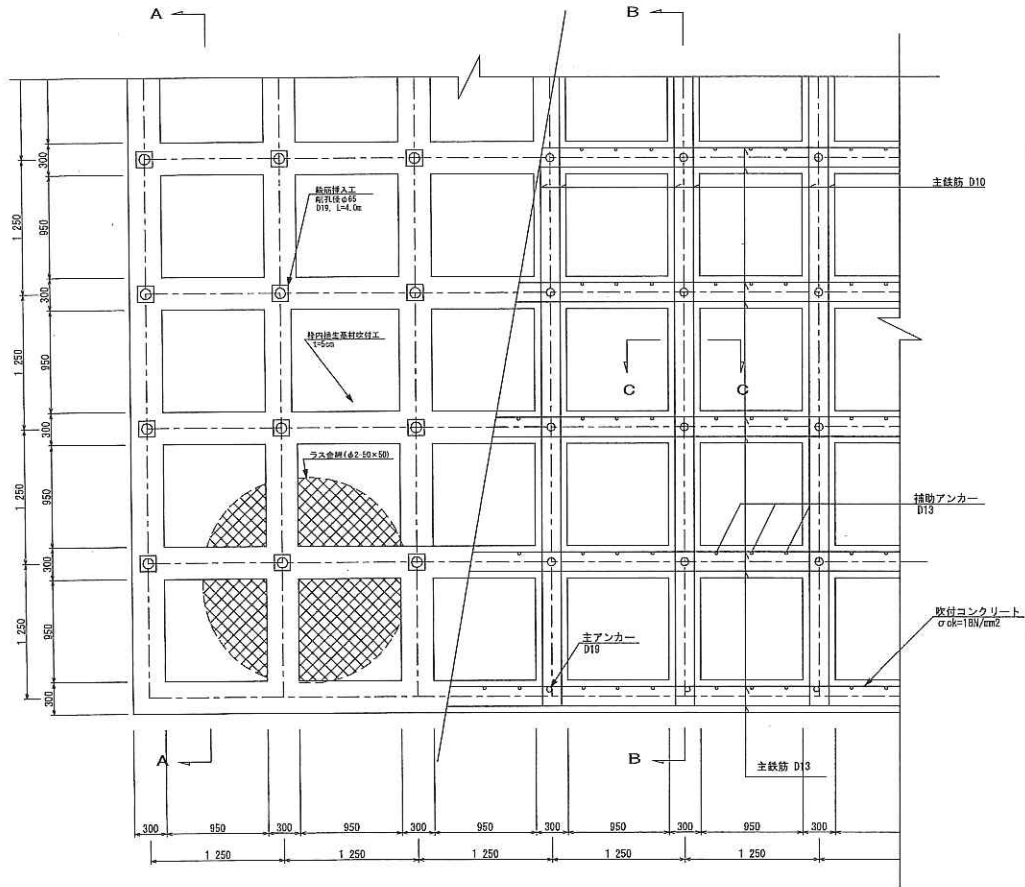
法面展開圖 S=1:200



吹付法枠工 (口300) 標準構造図

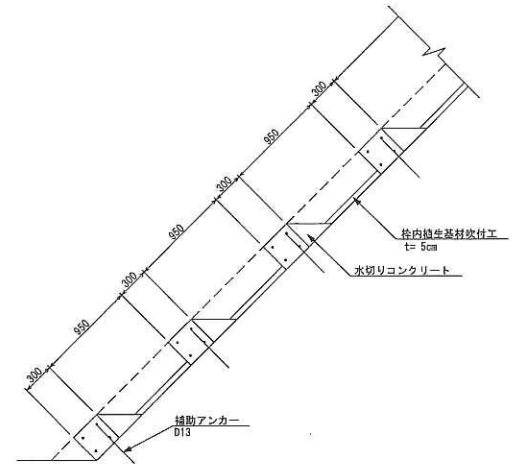
法枠展開図

S=1:25



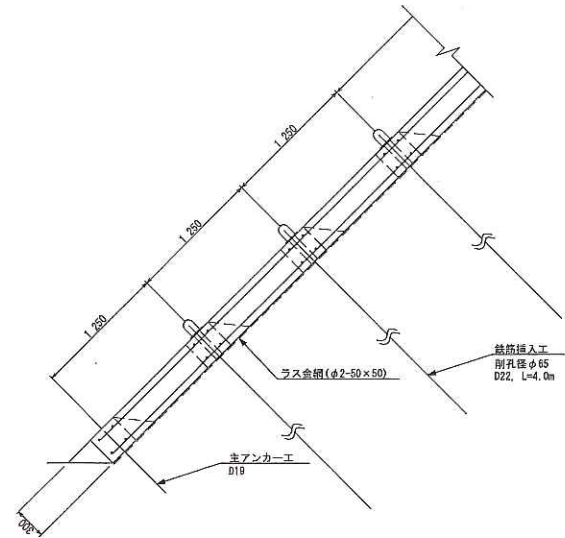
A-A 断面図

S=1:25



B-B 断面図

S=1:25



C-C 断面図

S=1:10

